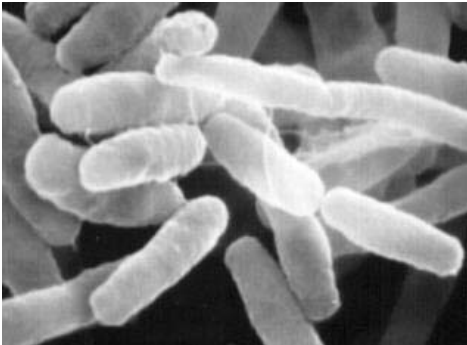


## Fast Facts

### Prevention and Control of Legionellosis



- During daily cleaning of patient rooms, the cleaning personnel (Support Associates or EVS Clinical Workers) will let the water in all patient rooms (hot and cold water faucets and showerhead) run for a minimum of 5 minutes/day to facilitate chlorine dioxide flushing through the pipes.
- Legionella is commonly found in various natural and man-made water environments.
- Patient populations who are immunosuppressed or who have underlying illnesses are most at risk for acquiring legionellosis.
- Our goal is to minimize the risk of nosocomial legionellosis.
- The Department of Infection Control (HEIC) monitors the occurrence of nosocomial Legionella daily.
- Facilities treats and monitors the water at the Central Power Plant.
- Water temperature will be maintained at 110° F at the sink outlet.

